

# 214/6 Speaker Stand

- load capacity: 110 lbs\*
- professional, solid, transportable
- Height: min. 55" / max. 86"; foot circle: 52"; extension  $\varnothing$  1-3/8" and 1-1/2"; weight: 9.7 lbs

Thank you for choosing this product. This instruction manual informs you about the important steps to set up and handle the product. We recommend to keep the manual in a place for a possible later use.

## SAFETY INSTRUCTIONS

- Load capacity: max. 110 lbs\*
- before use:
  - check the functional capability of: K&M-stand, speakers and tools concerning: completeness, integrity, usability
  - choose only trained installers (2 persons with professional and physical qualification)
- optimal stability conditions:
  - use only on even and stable surface
  - avoid off-center loading
  - set up brace 4 in horizontal position
- safety in operation:
  - unauthorized persons should keep distance to protect from stumble and tilting
  - inspect bolted assemblies regularly
  - always insert the safety pin after positioning of the speaker
  - do not push and pull the loaded stand on the floor; it can cause damages on the base
- safety in maintaining and removing
  - first remove load
  - pay attention to possible hazards (squeezing, hurting) by collapsing

## MOUNTING INSTRUCTIONS

Make sure all parts are there and in proper condition:

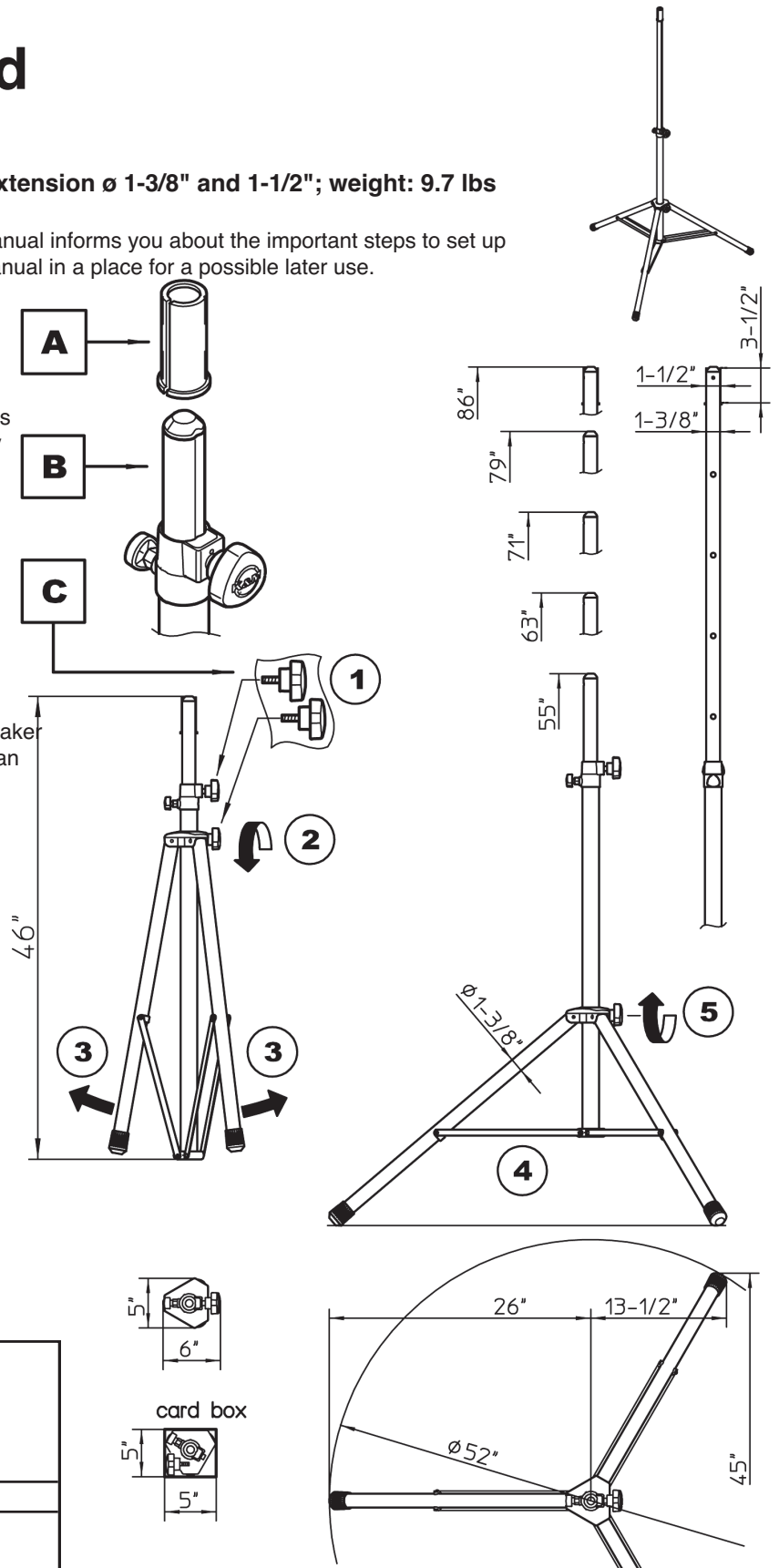
- A. adaptor sleeve, B. stand, C. locking knobs 2x  
The mounting of the 214/6 is easy to handle
- (1) screw-in both locking knobs
  - (2) loosen the locking knob on the base clamp
  - (3) spread legs apart to max. base width
  - (4) braces should come into a horizontal position
  - (5) tighten locking knob 2

### NOTE:

Do not over tighten the locking knobs.  
This will result in undue stress to the fitting.  
Just enough to hold the extensions position firmly.

## SPECIFICATIONS

Material	baseroles: Alu extension, braces, locking pin: steel clamps: zinc die-cast adaptor sleeve: (PA) foot rubbers: (TPE)
Load capacity	max. 110 lbs*
Dimensions	foot circle: diameter 52" height: 55 - 86" (by max.foot circle) extension: diameter 1-3/8" and 1-1/2"
Collapsed, kg	46 x 6 x 5", 9.7 lbs
Card box, kg	47 x 5 x 5", 11.4 lbs
Accessories (optional)	bag 21311 (for one or two 21460) K&M-flange adaptor (e.g. 19580, 19656) K&M-screw-on-adaptor 24281



\* With centric loading, on a horizontal surface and without lateral forces (wind, shocks etc.)

## ATTACHING & MOVING of the LOAD

### - NOTE!

Do not undervalue the weight of the load.

- Attaching and moving of the load should be done by trained installers
- While moving the load hold the extension in a safe and firm way.
- Secure the extension with the locking pin.
- NEW: the extension ends in a cone.  
This would be helpful to attach the load.

## MAINTENANCE

- Handle the stand with care.
- Maintain only in unloaded mode.
- For cleaning use a damp cloth and a non-abrasive cleaner.

## (D) DEBUGGING & (R) REPAIR

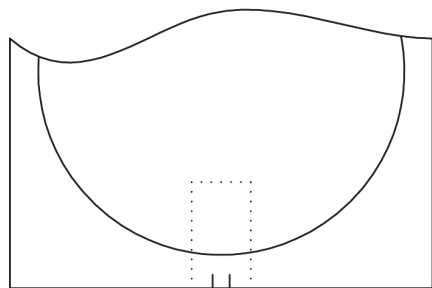
D: stand totters:

R: Arrange an even ground.

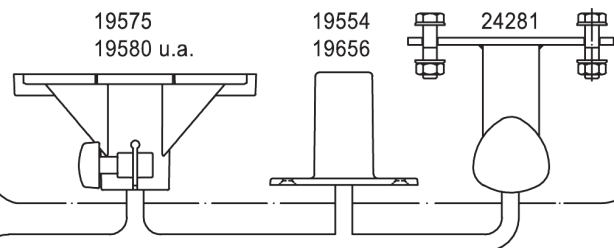
R: Spread legs into max. width and tighten the locking knob

D: Extension totters and/or is running in:

R: Make sure that the locking pin is in work and tighten locking knobs.



K&M-ADAPTORS (inner diameter: 1-3/8" = 35 mm)  
for use without adaptor sleeve A.



## MOVING

Involved Persons:

FI - First Installer:  
holds the loaded extension

SI - Second Installer:  
handles locking knob and  
locking pin

### Action:

FI

1 holds the extension firmly

SI

2 loosens the locking knob

3 pulls the head of the locking  
pin until the extension is  
able to move

FI

4 lifts the extension in  
desired height

NOTE: for easier finding of  
the pin hole this hole should  
be seen for a moment above  
the clamp

SI

5 unhands the head of the  
locking pin so it's able to  
atch into the hole of the  
extension

FI

6 lowers the extension  
slowly until the locking  
pin is latching into the  
hole

SI

7 tightens the locking knob

Remove the load in reverse order.

