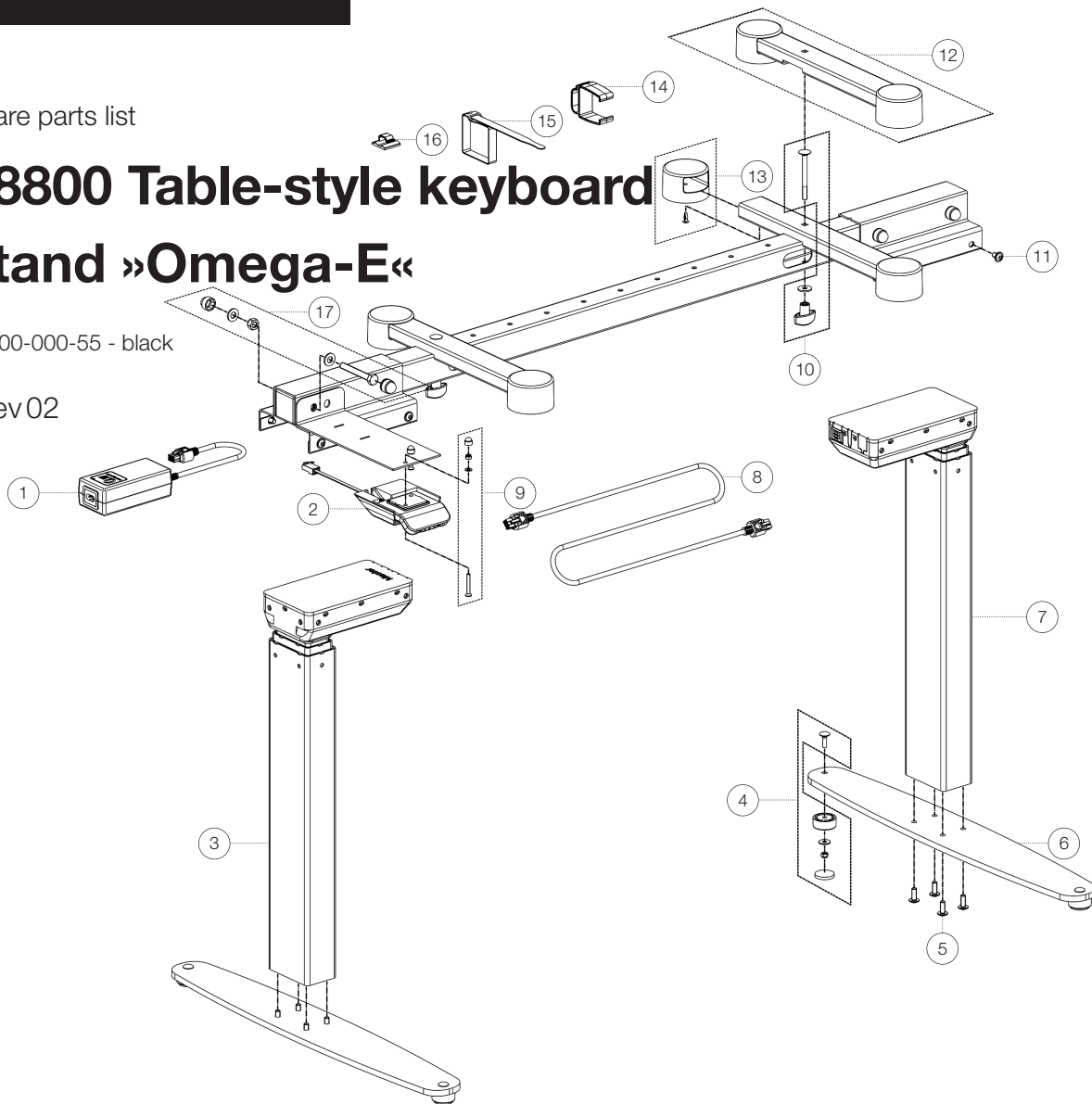


Spare parts list

# 18800 Table-style keyboard stand »Omega-E«

18800-000-55 - black

\*Rev02



Position	Description	Article No.	Quantity
1	Switching power supply SMPS006	03-19-159-55	1
2	Control panel DPG1C32 Bluetooth	03-19-095-00	1
3	Master column DL6 IC BIFMA	03-19-570-55	1
4	Foot with screw connection	3-00-000-192	4
5	Pan head screw M6 x 16 mm	03-03-495-25	8
6	Base plate	02-55-806-55	2
7	Slave column DL6 IC BIFMA	03-19-571-55	1
8	Motor cable	03-19-194-55	1
9	Control panel screw connection	3-00-000-191	2
10	Screw connection of the support	3-00-000-119	2
11	Pan head screw M6 x 10 mm	03-03-420-25	8
12	Support tube	6-18810-4-55	2
13	End cap with blind rivet	3-00-000-044	4
14	Cable clamp for »Omega«	01-85-941-55	3
15	One-Wrap-Strap 20 x 330 mm	03-22-770-55	2
16	Cable clamp	03-20-986-55	2
17	Screw connection bracket	3-00-000-190	4
Without fig.	Power cord 3,0 m EU	03-19-196-55	1
Without fig.	Power cord 3,0 m UK	03-19-187-55	1
Without fig.	Power cord 3,0 m Japan	03-19-188-55	1
Without fig.	Power cord 3.0 m USA	03-19-189-55	1